

# ROAD INDEX

<b>A</b>	ANNE LANE 02 ASCOT LANE E 3-4 AUBURN ROAD C1-C7 AUBURN LAKES DRIVE A3 AUBURNDALE DR 86	<b>J</b>	JACKSON DRIVE PVT A6 JACOBS DRIVE (PVT) F2 JENNIFER DRIVE 02	<b>S</b>	SAMBROOK LANE 02 SEELWOOD DR 07 SHAW RD 04 SIGNAL HILL (PVT) A3 SNOW RD F1-F2 SOUTH BLVD (PVT) A6 SOUTH PIN TAIL (PVT) A3 SPICEDERRY CIR C4 STAFFORD RD A2-E2 STAFFORDSHIRE CT 02 SUNSET DR 05-A6
<b>B</b>	BAINBRIDGE ROAD A4 BATHOLMEW RD. A5-D6 BASS RUN (PVT) A3 BLUE SPRUCE TR (PVT) A83 BRIDGE CREEK TR C4 BROADWAY DRIVE (PVT) A6 BROOKFIELD DRIVE A7	<b>K</b>	KASIK DRIVE PVT A6 KOPAS DRIVE (PVT) D5	<b>T</b>	TAYLOR MAY RD. A5-E5 THORPE ROAD B5-B7 TIMBER LN. C3 TWIN CREEKS (PVT) A3
<b>C</b>	CARRIAGE HILL 03 CHICKASHAY LANE 08 CHIMNEY LANE (PVT) A1 CINNAMON TRAIL C45 CINNAMON TRAIL C45 CLEVELAND DRIVE PVT. A6 CLUB LANE (PVT) A1 COLONIAL COURT A6 CRACKEL ROAD A7-E7 CREEKSIDE DRIVE A4 CREIGHTON DRIVE C3 CRYSTAL TRAIL A6 CURRY LANE C3	<b>L</b>	LAKE DRIVE (PVT) A6 LINDSAY LANE 02 LONG DRIVE (PVT) A3 LONGVIEW TRAIL C4 LOST LAKES TRAIL A2 LUCKY BELL LANE A1-A2	<b>U</b>	U.S. 422 A4-F4
<b>D</b>	DERBYSHIRE LANE 04 DOGWOOD LANE (PVT) A3 DOWNEY GLEN TR 02	<b>M</b>	MARYDALE DRIVE E1 MEADOW LANE C3 MESSENGER ROAD E1-D1 MT. PLEASANT DRIVE 14-A6 MUNN ROAD B1-B7	<b>V</b>	VALLEY ROAD F1-F4 VICTORIA DRIVE 02
<b>E</b>	EAGLES POINTE (PVT) A3 EDWARDS LANE A7 EASTWOOD DRIVE 06	<b>N</b>	NORTH BLVD. PNT. A6 NORTH PIN TAIL (PVT) A3	<b>W</b>	WASHINGTON STREET A3-E4 WATERFORD TRAIL A6 WEATHERTOP LANE A2 WHISPER WOOD CIRCLE A1 WHITE OAK DRIVE 06 WIDGEON DRIVE A5-B5 WINDWARD WAY (PVT) A3 WING ROAD C3-C4 WINDGATE DR C4 WOOD ACRE TRAIL A2 WOODSONG WAY (PVT) A3
<b>F</b>	FAIRWAY VIEW (PVT) A3 FOX ROAD F6-F7 FRANKS ROAD 91-D1 FRANKLIN ROAD (PVT) 86	<b>O</b>	OVERLOOK BROOK CTR (PVT) A3 OVERLOOK BROOK DR (PVT) A3	<b>Y</b>	POINTE BREEZE (PVT) A3 PRIMROSE COURT A6
<b>G</b>	GREATWOOD LAKE D5 GREENWAY TRAIL (PVT) A2	<b>P</b>	QUINN ROAD A5-A6	<b>Z</b>	
<b>H</b>	HEATHER HILL (PVT) A3	<b>R</b>	RAVENNA ROAD E1-E7 RIVER WOOD LANE 02-3 ROBIN WOOD LANE 02-3		
<b>I</b>	INDIAN HILLS DR. A4				

- ① AUBURN ELEM. SCHOOL
- ② AUBURN COMMUNITY CHURCH
- ③ AUBURN TOWN HALL
- ④ BENTON LAKES RESERVATION - PARK
- ⑤ AUBURN VOL. FIRE DEPT.

## AUBURN TOWNSHIP

SCALE 1" = 2000'  
ROBERT L. PHILLIPS  
GEAUGA COUNTY ENGINEER

UNPAVED ROAD  
PAVED ROAD  
TOWNSHIP LINE  
COUNTY LINE

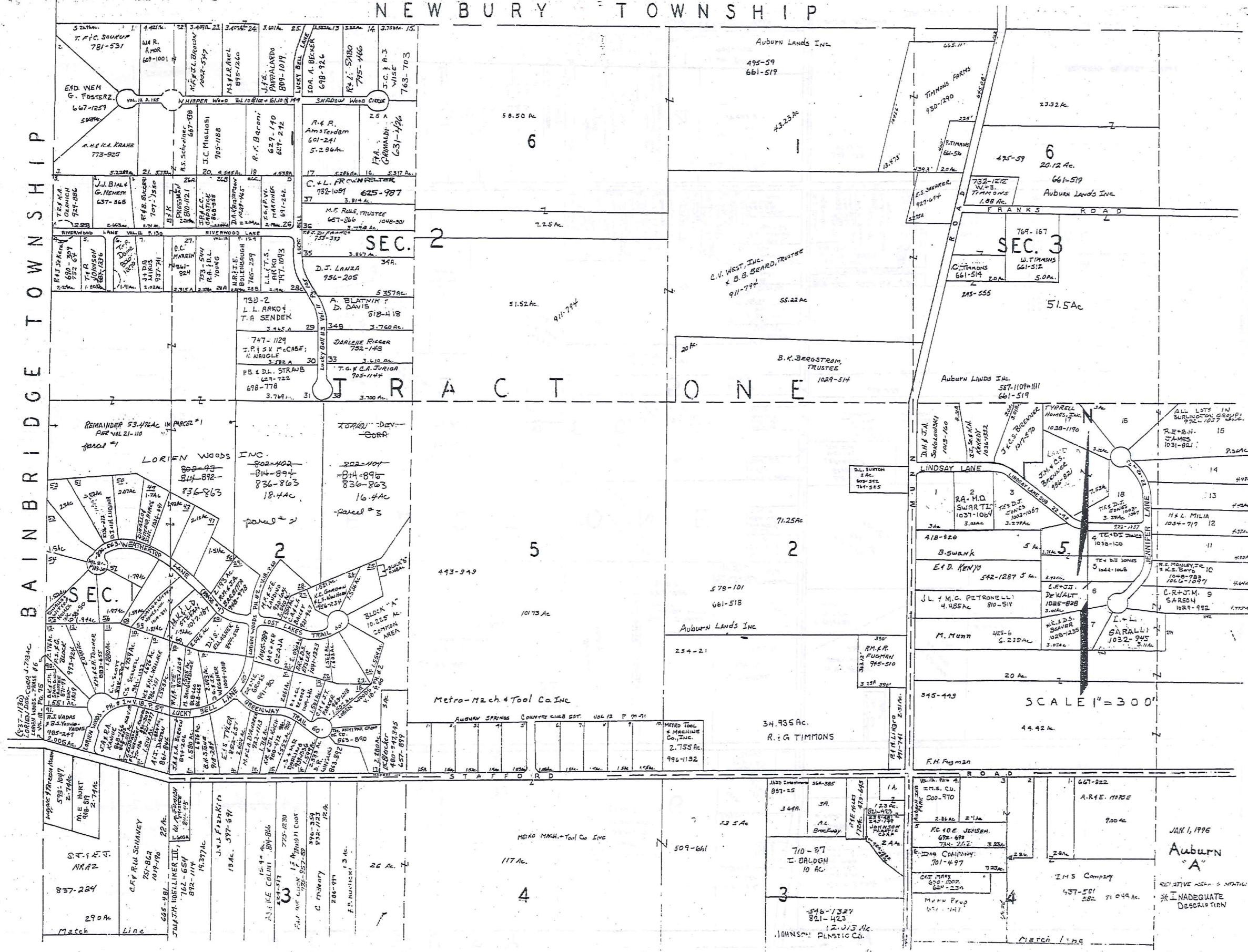
DECLARATION OF CONDOMINIUM FOR THE WOODS AT AUBURN LAKES

BLDG/UNIT	ROAD NAME	DATE AC.	PLAT -	AMENDMENT	VOL	PG	TRANSFERRED TO	VOL	PG.		
620	BLUE SPRUCE TRAIL	2/95 .507	LEGEND #1	ORIGINAL	22	77					
621	"	2/95 .507	LEGEND #1	ORIGINAL	22	77	S. J. MITCHELL	100B	1066		
622	"	2/95 .664	LEGEND #8	AMENDMENT #7	23	50					
623	"	2/95 .664	LEGEND #8	AMENDMENT #7	23	50	AMERI-CON AUBURN INC.	1041	980	D.T. & C.H. WAKEMAN	1041 987
625	BLUE SPRUCE TRAIL	7/95 .714	LEGEND #3	AMENDMENT #2	22	103	AMERI-CON AUBURN INC.	1030	783	G. * W. K. SILVER	1030 785
626	BLUE SPRUCE TRAIL	7/95 .714	LEGEND #3	AMENDMENT #2	22	103	AMERI-CON AUBURN INC.	1032	664	J.G. * M.D. WALKER	1032 662
627	BLUE SPRUCE TRAIL	5/95 .599	LEGEND #2	AMENDMENT #1	22	91	J. M. TAYLOR	1015	897-73		
628	"	5/95 .599	LEGEND #2	AMENDMENT #1	22	91	AMERI-CON AUBURN INC.	1020	380	M.H. BAUMGARTNER, TRUSTEE	1020 388
632	BLUE SPRUCE TRAIL	4/96 .530	LEGEND #9	AMENDMENT #8	23	59	AUBURN LAKES LTD PART (884-865)				
633	BLUE SPRUCE TRAIL	4/96 .530	LEGEND #9	AMENDMENT #8	23	59					
638	BLUE SPRUCE TRAIL	8-95 .522AC	LEGEND #4	AMENDMENT #3 (P/1000 11A)	22	113	AMERI-CON AUBURN INC.	1043	56	J.R. PERKINS	1043 58
639	BLUE SPRUCE TRAIL	8-95 .522AC	LEGEND #4	AMENDMENT #3	22	113	AMERI-CON AUBURN INC.	*1026	647	A.C. D.K. BARBER	1026 649 X
FOR AC. ELL MAP ALL LOTS IN AUBURN LKS LTD PART		886	865								
DOGWOOD LANE (LWT)		2/95	6.634	LEGEND 1 - ORIGINAL	22	77					
DOGWOOD LANE (6.634 AC)		5/95		LEGEND 2 - AMENDMENT #1	22	91					
507	DOGWOOD LANE LEAVING 6.367AC	7/4/95 .267AC	LEGEND 5	AMENDMENT #4	23	07	AMERI-CON AUBURN INC.	1030	876	V.H. & L.B. ANDREWS	1030 878
508	DOGWOOD LANE LEAVING 5.341	11/95 .309AC	LEGEND 7	AMENDMENT #6	23	28	AMERI-CON AUBURN INC.	1035	273	A.J. & C.J. GROINA	1035 275
510	DOGWOOD LANE LEAVING 5.93AC	9/29/95 .437AC	LEGEND 6	AMENDMENT #5	23	06	AMERI-CON AUBURN INC.	1029	120	J.H. & G.L. MURRISH	1029 122
TOT LOT 912A AUBURN LAKES DRIVE		2/95		LEGEND #1 - ORIGINAL	22	77					
WELL #3 - .19AC		2/95		"	22	77					
WATER PLANT .442AC PINE BREEZE DRIVE		2/95		"	22	77					
DOGWOOD LANE		2/95		LEGEND #1 - ORIGINAL	22	77					

2

NEWBURY TOWNSHIP

BAINBRIDGE TOWNSHIP



TRU-REID  
1-800-345-7334  
SCALE IN FEET OR INCHES

JAN 1, 1996  
Auburn  
"A"  
SUFFICIENT AREA - 5 NANTIC  
\* I NADEQUATE  
DESCRIPTION

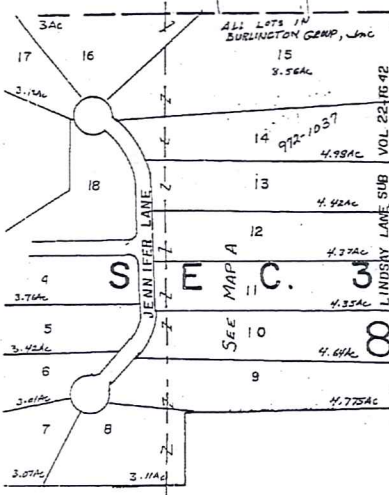
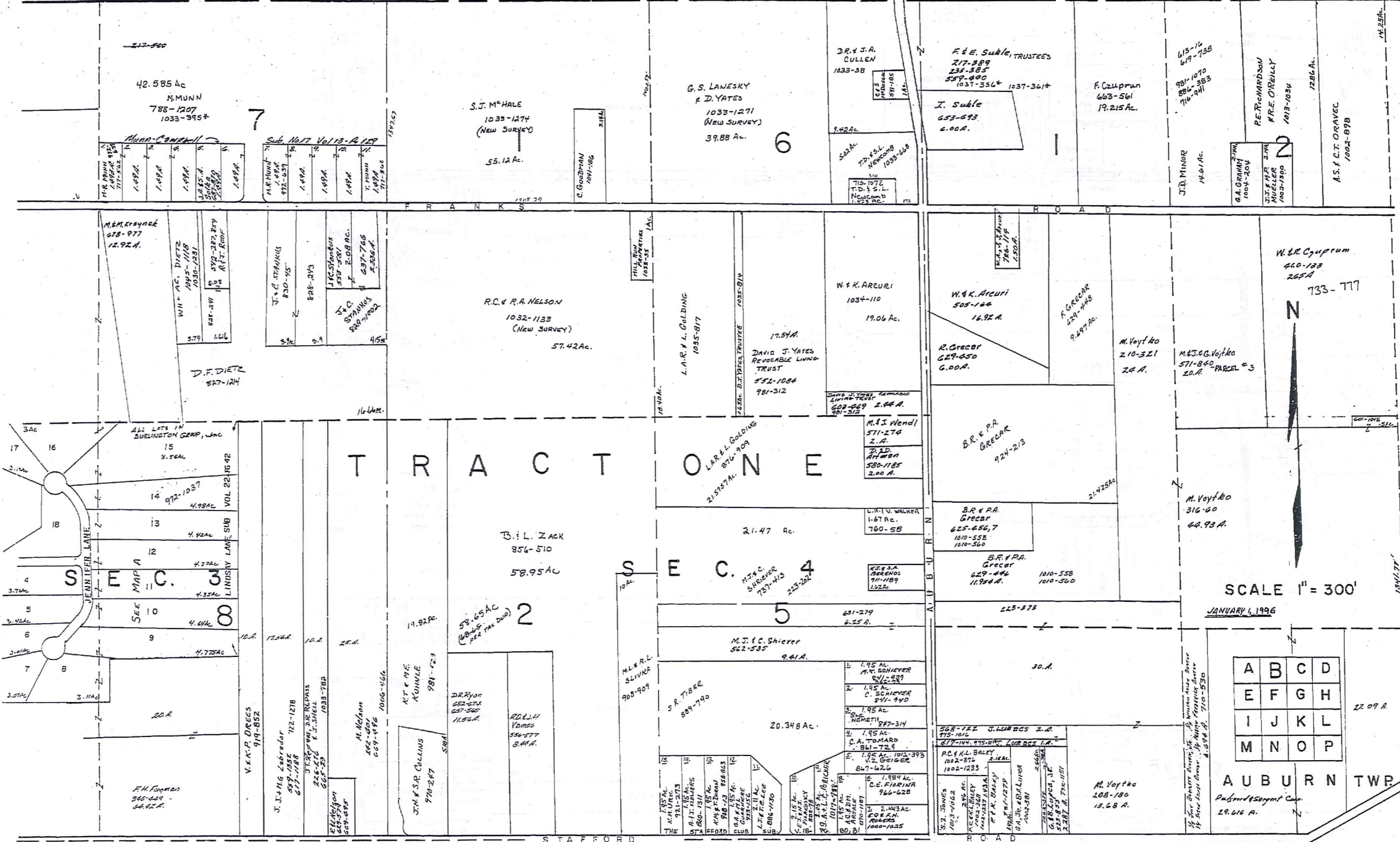
3

4

3

4

NEWBURY TWP.



SCALE 1" = 300'

JANUARY 1, 1996

A	B	C	D
E	F	G	H
I	J	K	L
M	N	O	P

AUBURN TWP.

4

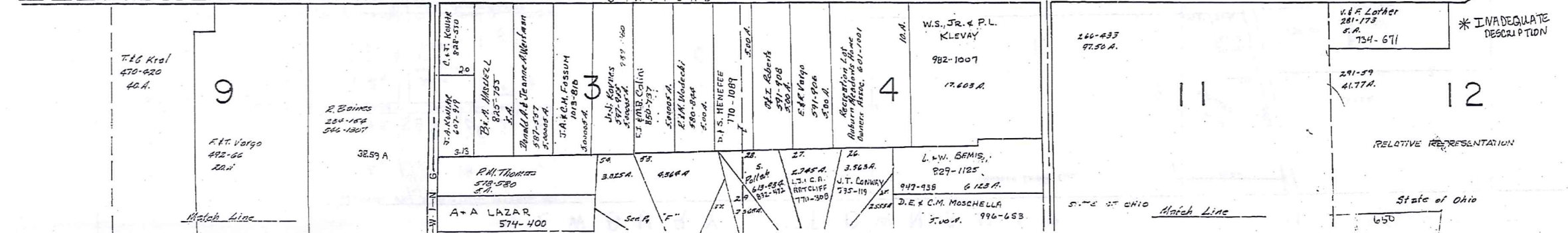
TRW-BED 1-800-345-7334

SCALE 1/10" OF AN INCH

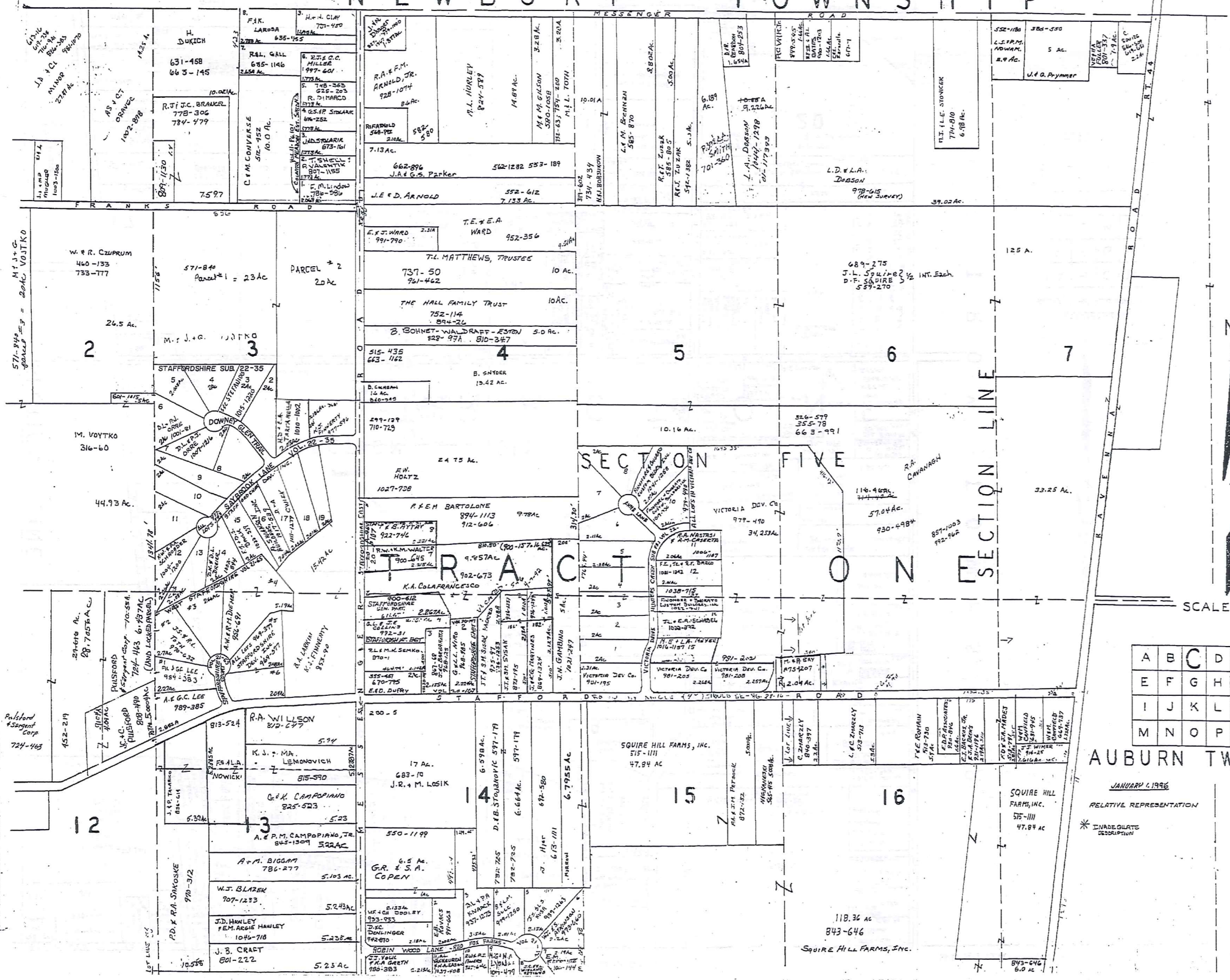
\* INADEQUATE DESCRIPTION

RELATIVE REPRESENTATION

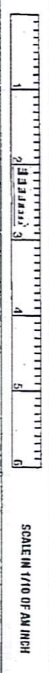
State of Ohio



# NEWBURY TOWNSHIP



TERRACED  
1-800-245-7334



SCALE IN 1/10 OF AN INCH

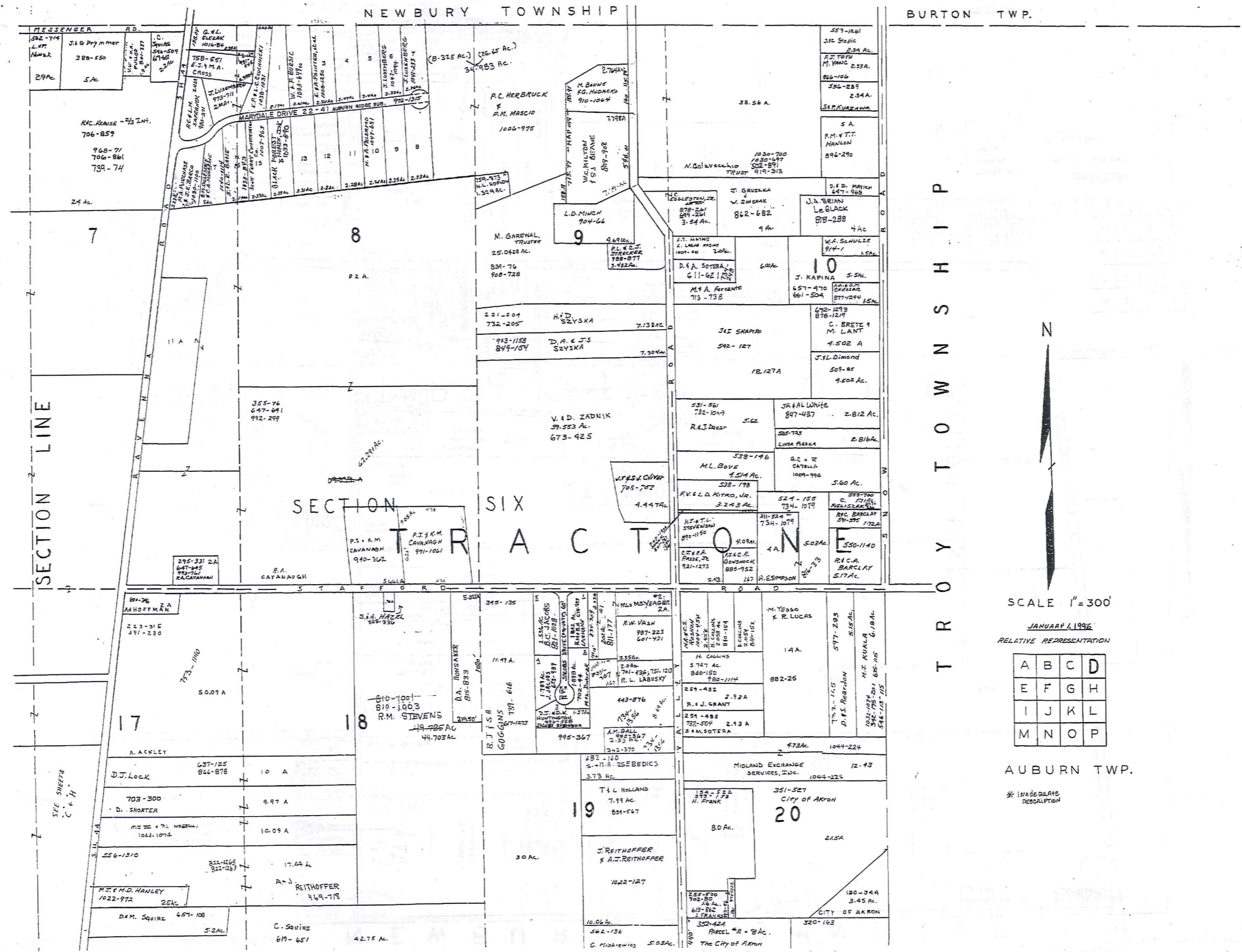
SCALE 1"=300'

A	B	C	D
E	F	G	H
I	J	K	L
M	N	O	P

AUBURN TWP.

JANUARY 1, 1996  
RELATIVE REPRESENTATION

\* INADEQUATE DESCRIPTION



BURTON TWP.

T R O Y T O W N S H I P



SCALE 1" = 300'

JANUARY 1, 1996  
RELATIVE REPRESENTATION

A	B	C	D
E	F	G	H
I	J	K	L
M	N	O	P

AUBURN TWP.

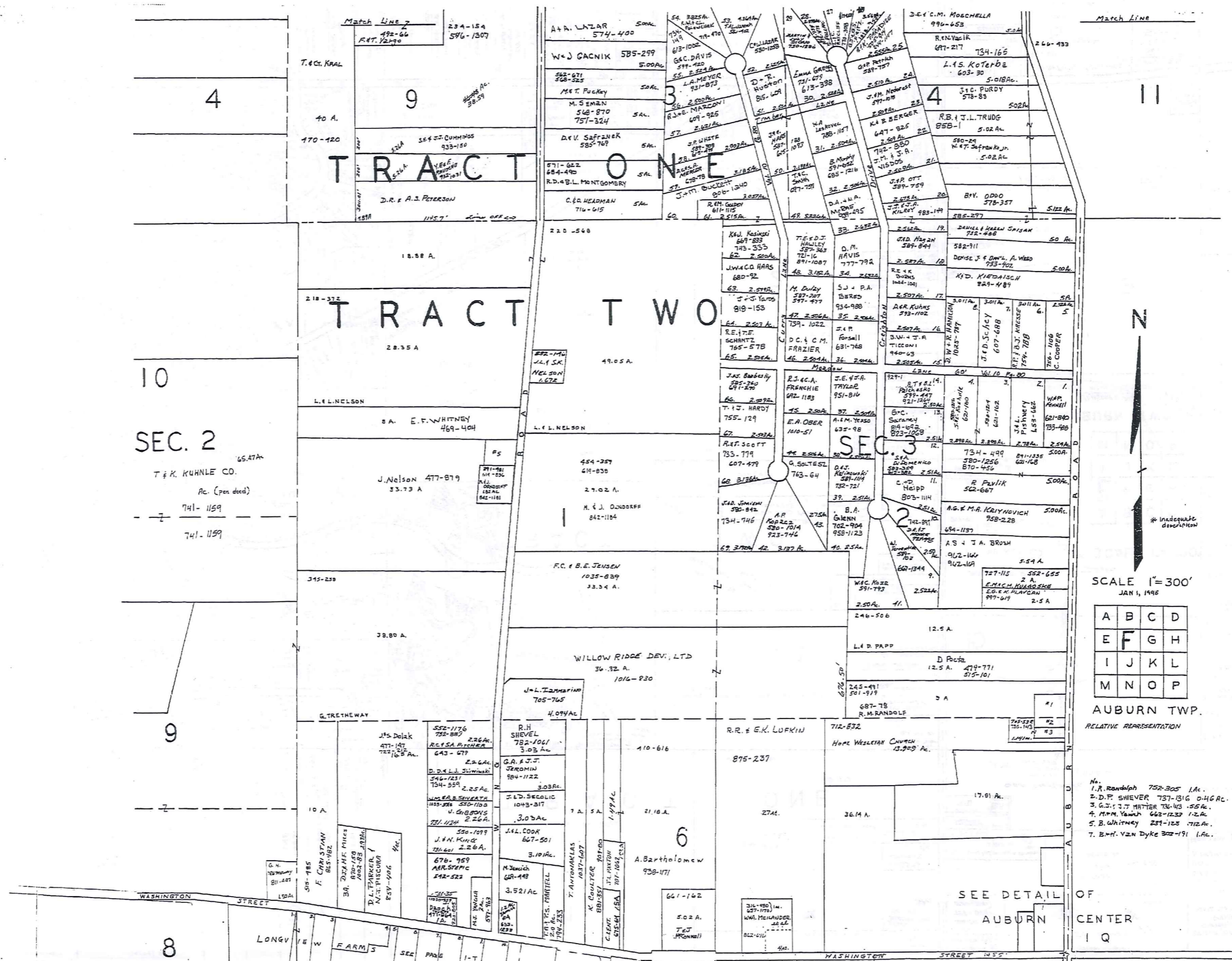
\* INADEQUATE DESCRIPTION

TOWN-REDI  
1-800-345-7334



SCALE IN 1/100 OF AN INCH





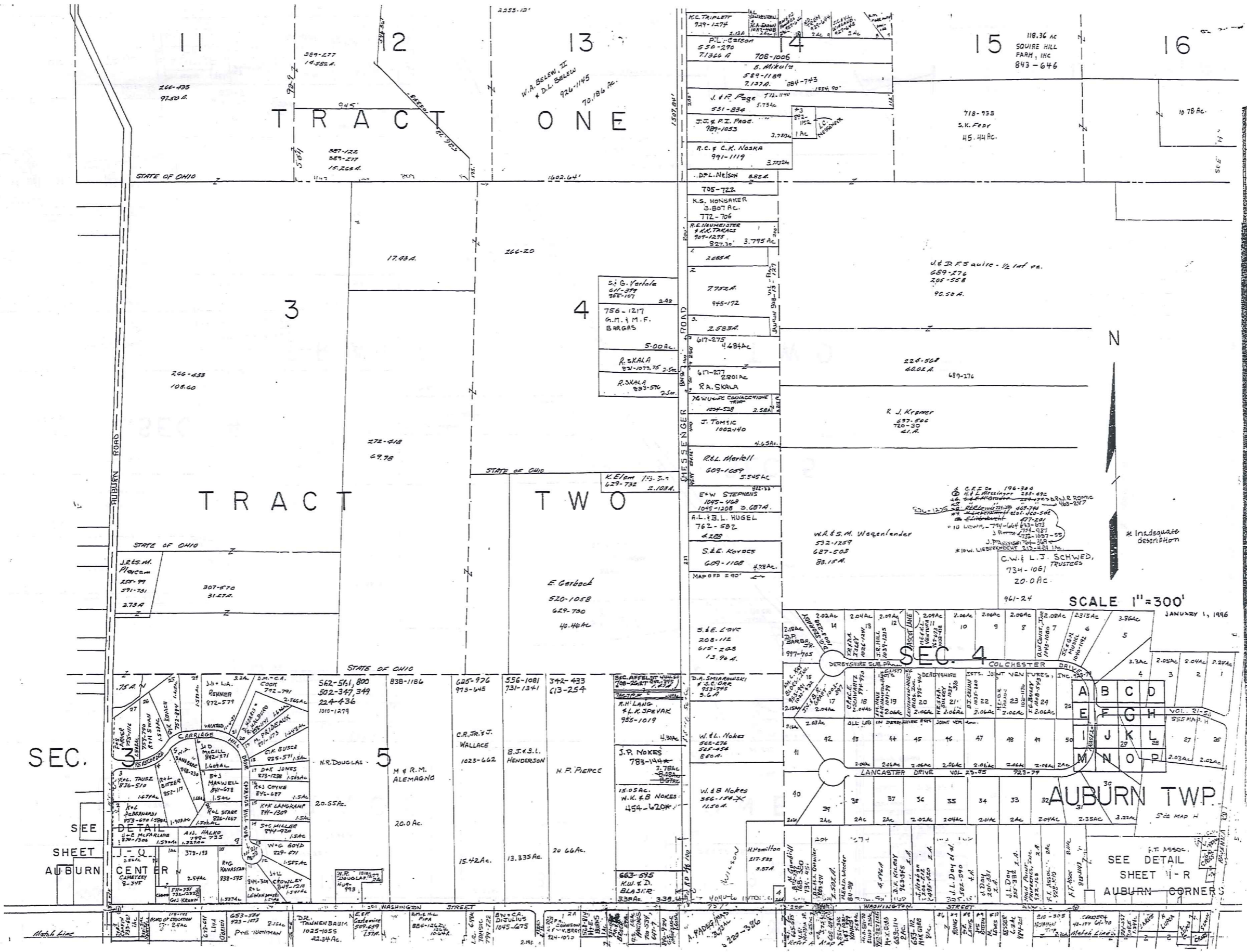
TRAFFIC  
 1-800-345-7334  
 SCALE IN 1/10 OF AN INCH

SCALE 1"=300'  
 JAN 1, 1996  

A	B	C	D
E	F	G	H
I	J	K	L
M	N	O	P

 AUBURN TWP.  
 RELATIVE REPRESENTATION

SEE DETAIL OF  
 AUBURN CENTER  
 I Q



TRM-RE-01  
 1-800-345-7334  
 SCALE 1" = 300'  
 JANUARY 1, 1996  
 STATE MAP OF OHIO

SCALE 1" = 300'

JANUARY 1, 1996

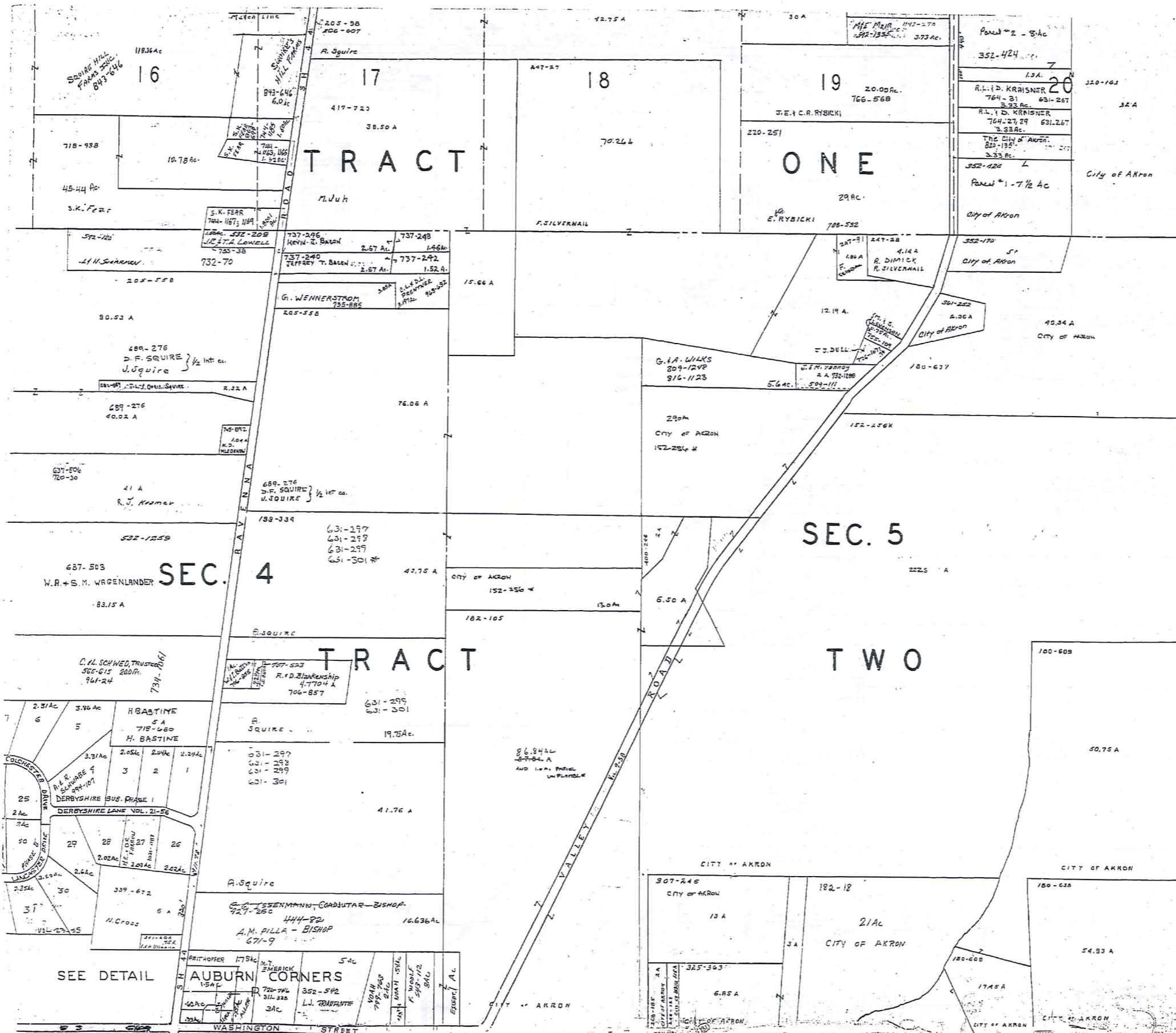
AUBURN TWP.

SEE DETAIL SHEET H-R AUBURN CORNER

SEE SHEET AUBURN

Match Line

Match Line



TROY TOWNSHIP



SCALE 1" = 300'

A	B	C	D
E	F	G	H
I	J	K	L
M	N	O	P

AUBURN TWP.

JANUARY 1, 1996  
RELATIVE REPRESENTATION

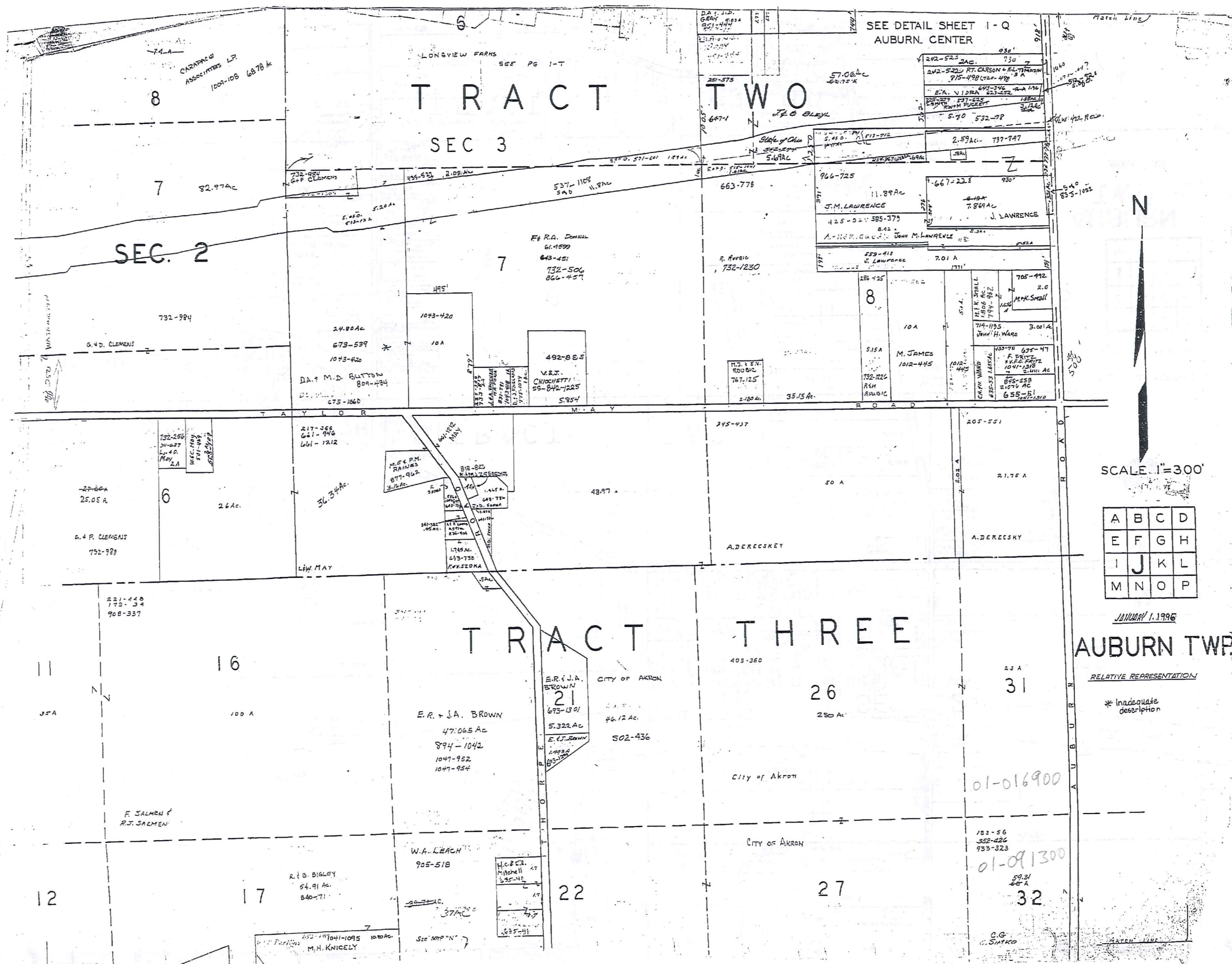
\* Inadequate description  
⑬ 59Ac - 187-298 CITY OF AKRON

TWM-REDI  
1-800-345-7334



SCALE IN 1/100 OF AN INCH





# TRACT TWO

## SEC 3

## SEC. 2

# TRACT THREE

## AUBURN TWP.

SCALE 1" = 300'

A	B	C	D
E	F	G	H
I	J	K	L
M	N	O	P

JANUARY 1, 1996

RELATIVE REPRESENTATION

\* Inadequate description

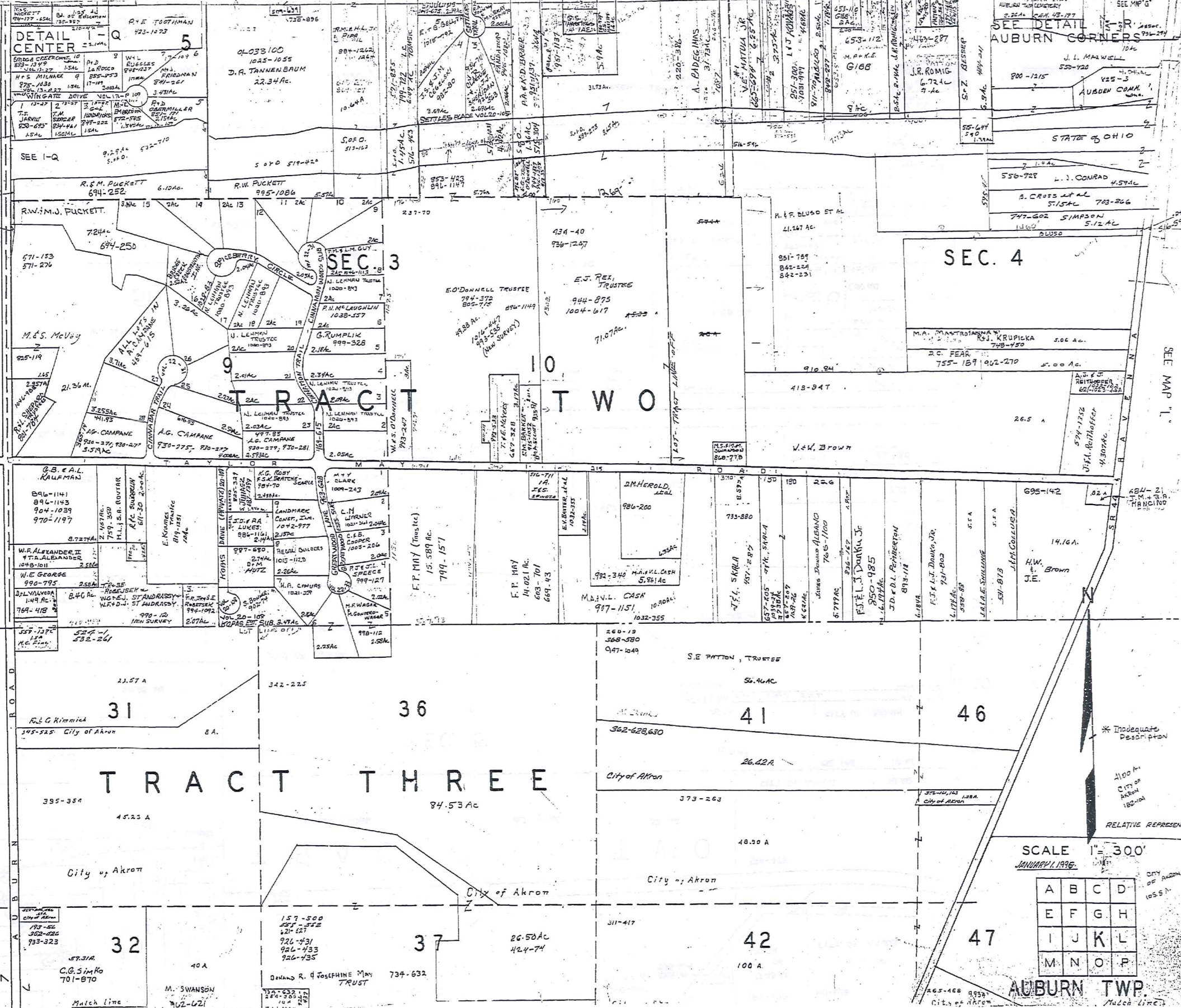
TRW-REDU  
1-800-345-7334



SCALE IN FEET OR INCH

SEE AUBURN CENTER MAP OFF

SEE DETAIL FOR AUBURN CORNERS



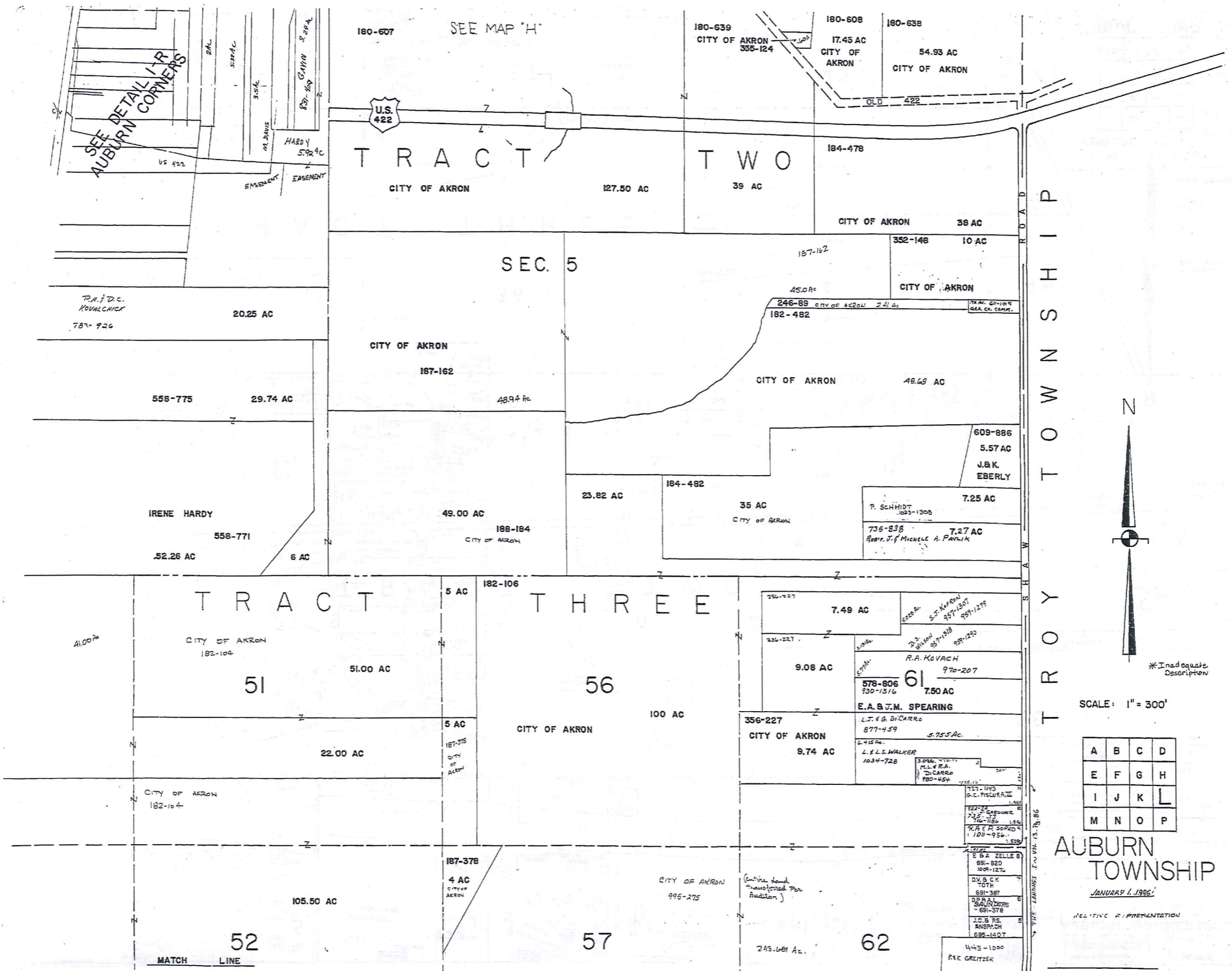
TRW-REDDI  
1-800-345-7334

SEE MAP "L"  
SCALE IN 1/10 OF AN INCH

SCALE 1" = 300'  
JANUARY 1, 1996

A	B	C	D
E	F	G	H
I	J	K	L
M	N	O	P

AUBURN TWP.  
Match Line



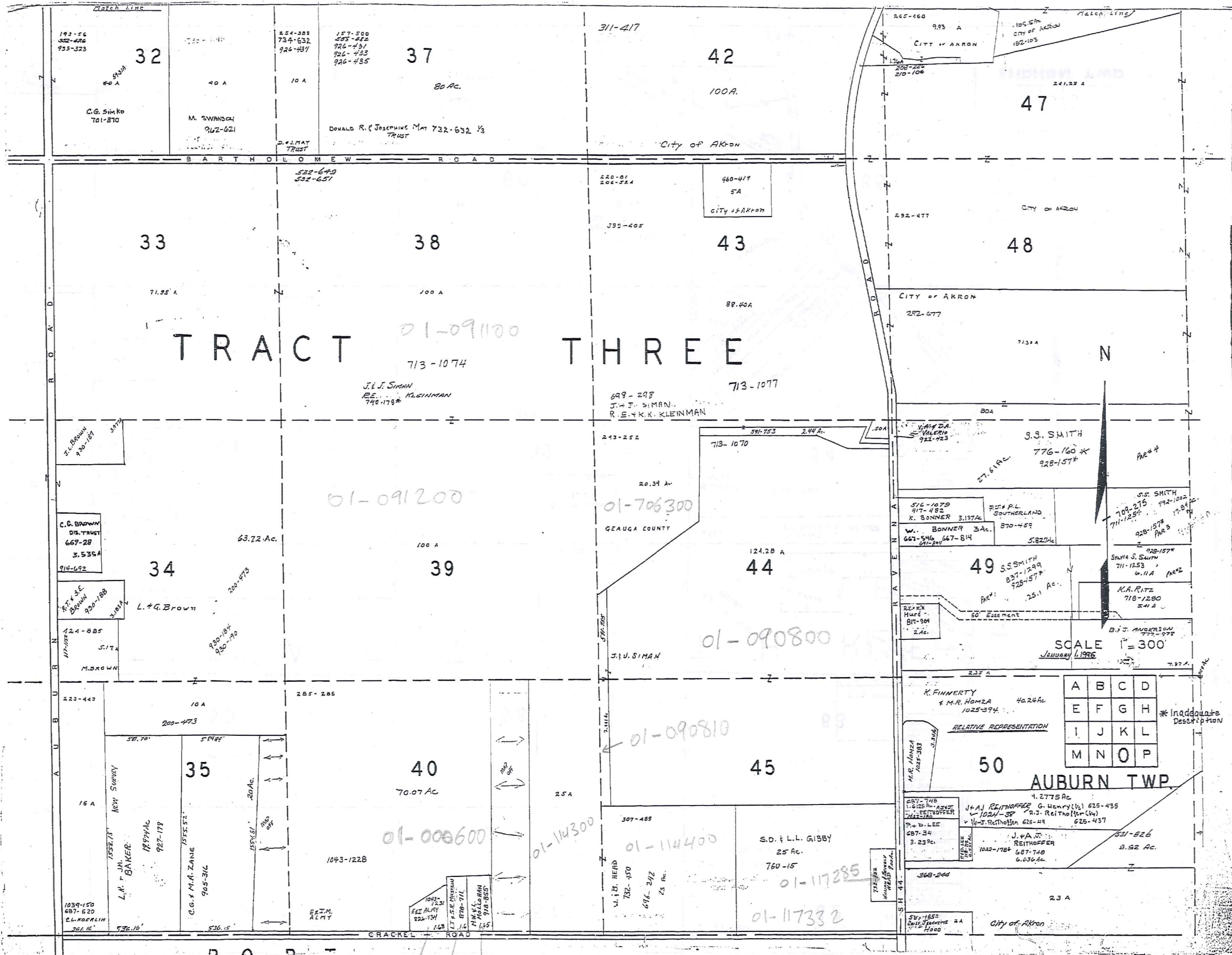
TROY TOWNSHIP  
 1-800-345-7334  
 SCALE: 1" = 300'  
 \*Inadequate Description

A	B	C	D
E	F	G	H
I	J	K	L
M	N	O	P

AUBURN TOWNSHIP  
 JANUARY 1, 1995  
 NEGATIVE REPRESENTATION







TRACT THREE

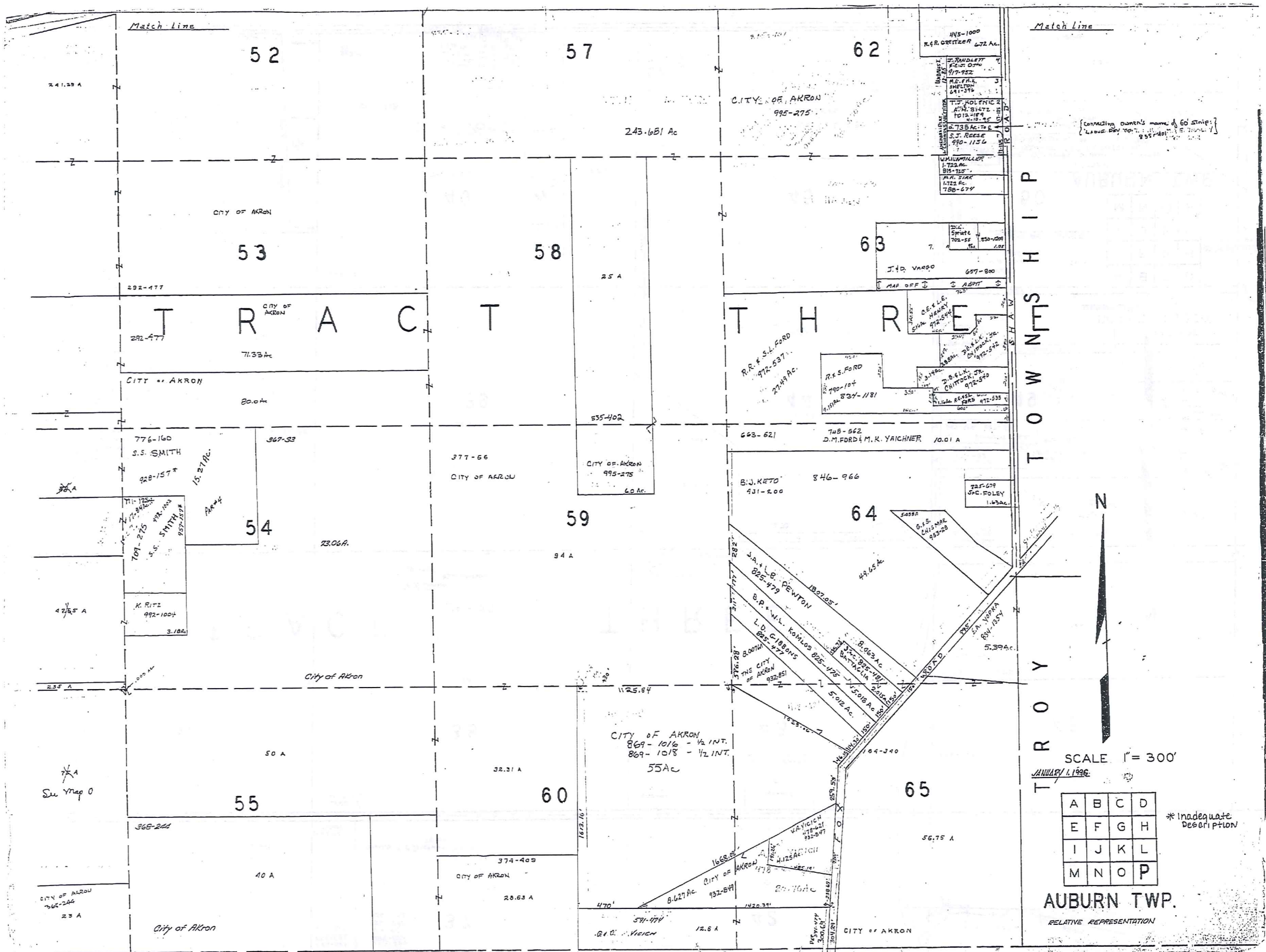
SCALE 1" = 300'  
January 1, 1996

A	B	C	D
E	F	G	H
I	J	K	L
M	N	O	P

\* Inadequate Description

TRW-REM 1-800-345-7334

01-117449  
01-117448  
01-117447



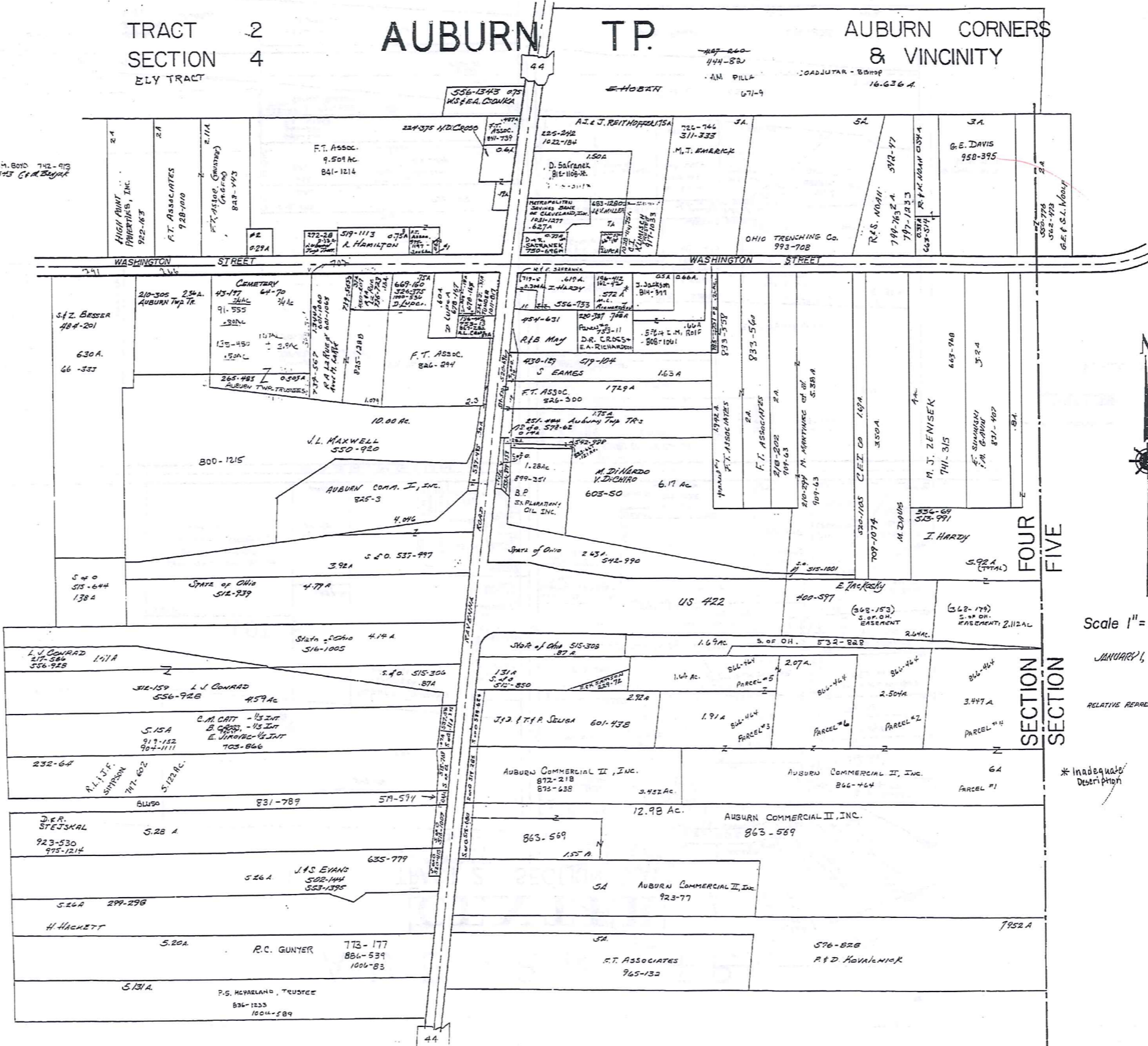


TRACT 2  
SECTION 4  
ELY TRACT

# AUBURN TP.

AUBURN CORNERS  
& VICINITY

12.3.54 K.H. BOYD 742-973  
13.3.73-543 C.A. BISHOP



Scale 1" = 2.5 ch. = 165 ft.

JANUARY 1, 1996

RELATIVE REPRESENTATION

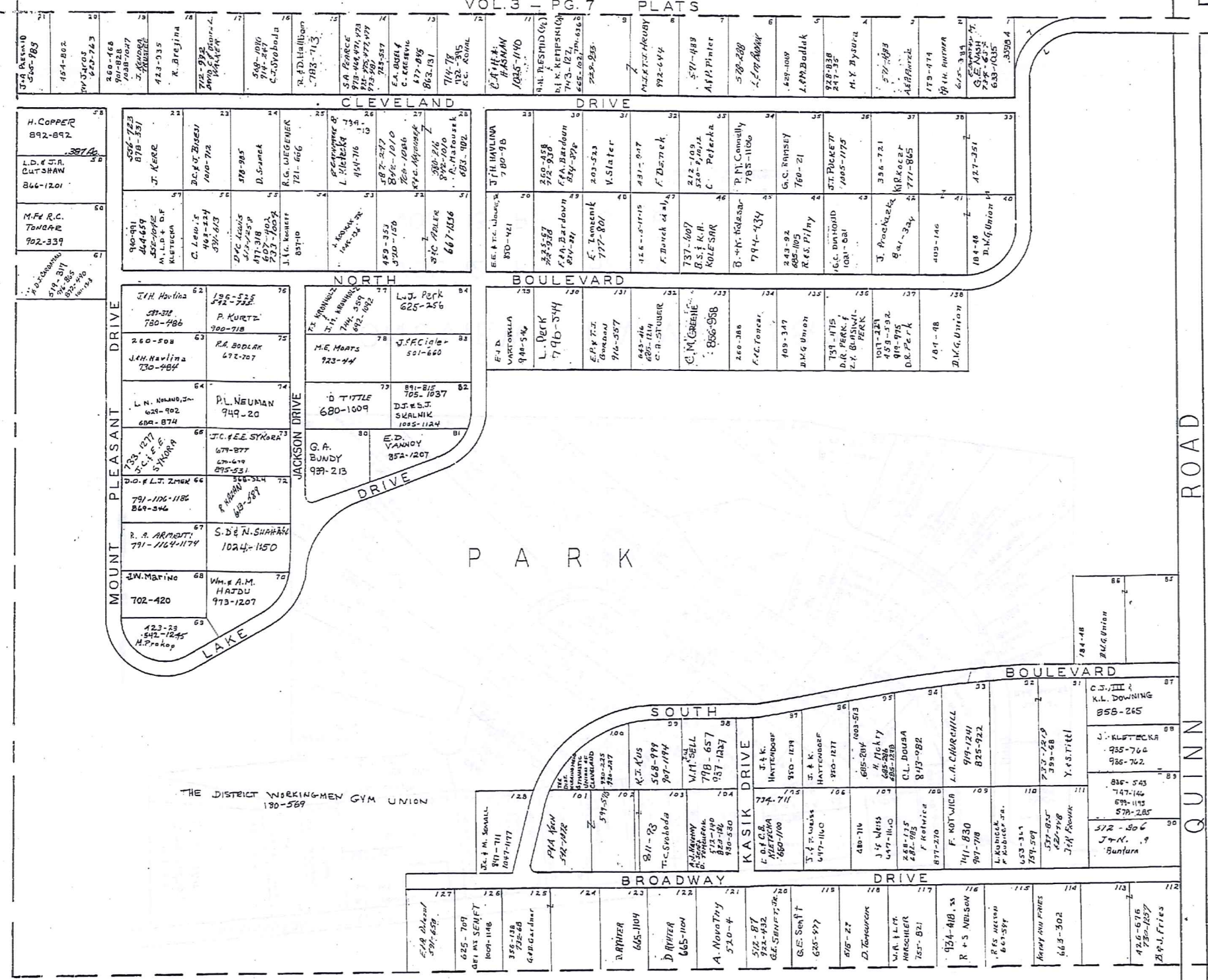
\* Inadequate Description

I-R

TRM-REDI  
 1-800-345-7334  
 SCALE IN 1/16 OF AN INCH

# TABOR SUBDIVISION

VOL. 3 - PG. 7 PLAT 5



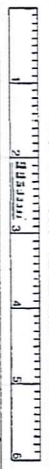
SCALE 1" = 100'

JANUARY 1, 1896  
AUBURN TWP.

RELATIVE REPRESENTATION

\* Inadequate Description

TWP-RED  
1-800-345-7334

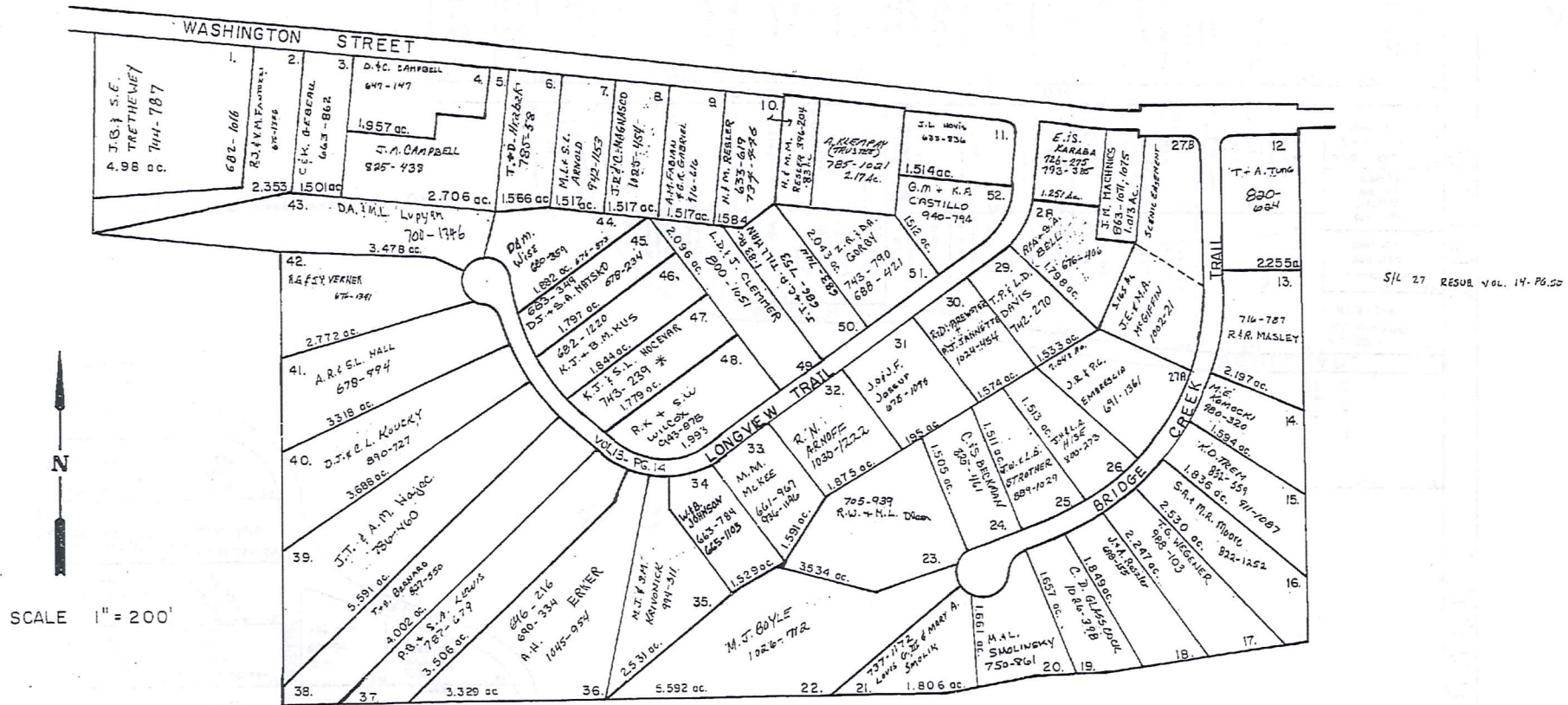


SCALE IN 1/100 OF AN INCH

AUBURN

O.L. 8 SEC. 2

O.L. 6 SEC. 3 TRACT 2



22

SCALE 1" = 200'

LONGVIEW FARMS 1 & 2

VOL. 12 PP. 62-64

VOL. 13 PP. 13-16

JANUARY 1, 1916  
RELATIVE REPRESENTATION

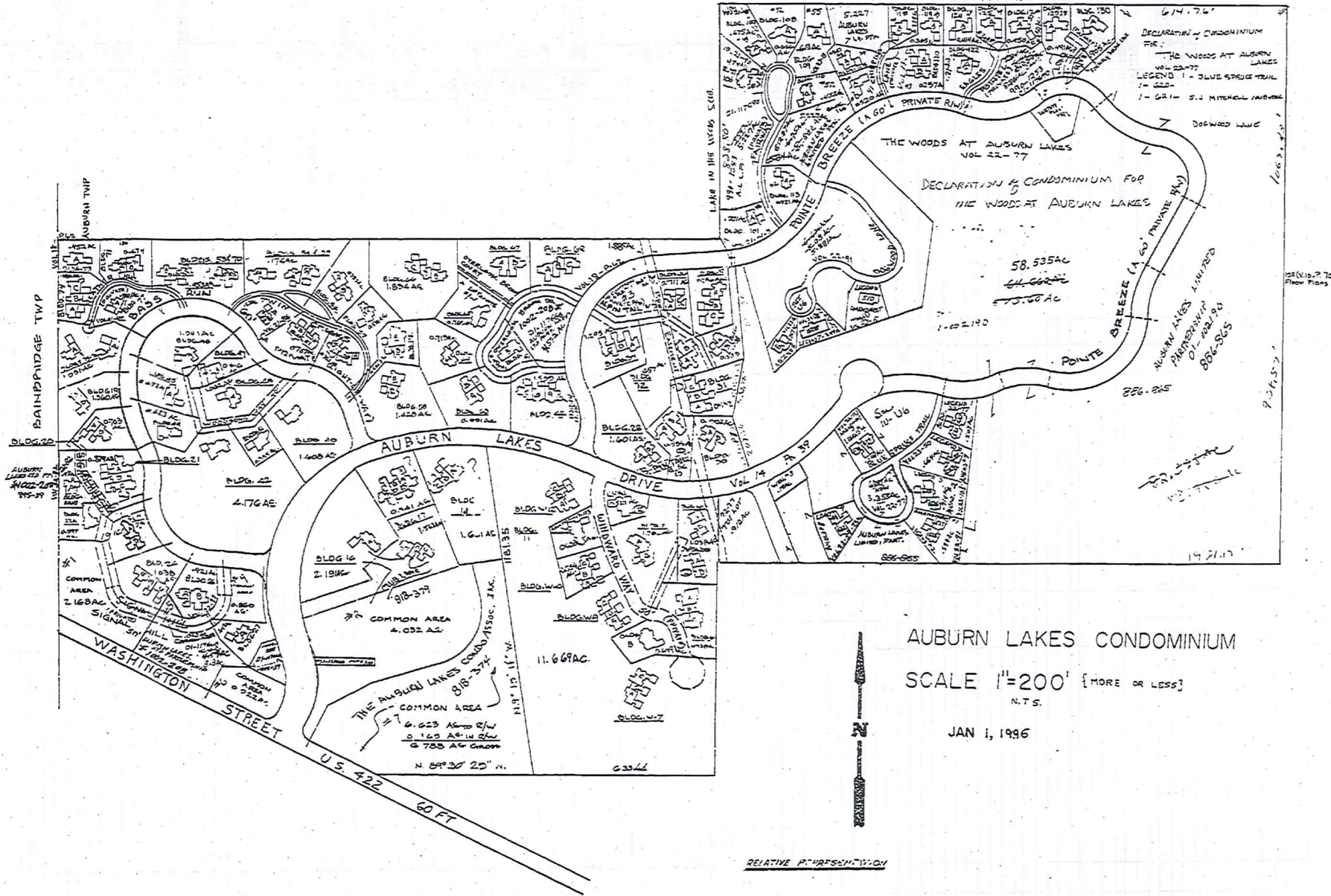
\* Inadequate Description

TRM-BED  
1-800-349-7334



SCALE IN FEET OF AN INCH

LAND IN THE WOODS SUBDIVISION Vol. II Pg. 33



TWM-REDI  
 1-800-345-7334

SCALE IN 1/100 OF AN INCH

\* INADEQUATE DESCRIPTION

I-U  
U-1

BLDG/UNIT	TRANSFERRED TO	VOL PG	TRANSFERRED TO	VOL PG	TRANSFERRED TO	VOL PG	TRANSFERRED TO	VOL PG
BLDG W-1 A-66	(WINDWARD WAY) M. L. LAVIN	15 718 161		1031 1120				
BLDG W-2 A-67 B-68	(WINDWARD WAY) M. L. LAVIN H. M. HANMER	17 718 161 900 437		1031 1120				
BLDG W-3 A-54 B-52	(WINDWARD WAY) A. D. O'HARA W. S. RIML	14 815 1040 708 427						
BLDG W-4 A-50 B-48	(WINDWARD WAY) D. DOLCH G. E. KING, TRUSTEE	14 718 127 815 1040						
BLDG W-5								
BLDG W-6 A-46 B-44 C-42	(WINDWARD WAY) W. L. BIRUS TRUST M. T. MASTERS	15 718 203 801 405		1031 9				
BLDG W-7 A-40 B-38 C-36	(WINDWARD WAY) H. BARRON H. EPPECHT C. HALLAND	14 718 203 718 203 718 203		1031 131				
BLDG W-8 A-34 B-32	(WINDWARD WAY) D. F. LEDNER	14 718 203 718 203						
BLDG W-9 A-30 B-28 C-26	(WINDWARD WAY) E. H. DOLAN A. DEWISCH B. LANGRISH	14 718 203 718 203 801 200						
BLDG W-10 A-24 B-22 C-20	(WINDWARD WAY) B. C. HERMAN M. D. HERMAN H. EPPECHT	14 801 200 707 1005 801 203						
BLDG W-11 A-16 B-14	(WINDWARD WAY) L. S. HARRIS L. S. HARRIS	14 718 203 718 203		1031 1091				
BLDG W-12 A-14 B-12 C-10	(WINDWARD WAY) B. A. THOMAS C. L. DODD, TRUSTEE S. H. E. T. COX	14 718 203 801 203 717 100		1031 103				
BLDG W-13 A-12 B-10 C-8	(WINDWARD WAY) C. G. COVE C. J. A. D. M. BRIDE THOMAS ALGONIA JAMES DONALD & DRES WISE	15 718 203 718 203 718 203 718 203						
BLDG W-14 A-10 B-8 C-6	(WINDWARD WAY) T. A. D. CLARK T. A. P. PORTER M. L. DODGEY	15 718 203 815 1040 815 1040		1031 121				
BLDG W-15 A-8 B-6 C-4	(WINDWARD WAY) C. L. LANE C. L. LANE N. A. SCHWARTZ D. H. DIEZEL, JR. H. T. FAY	15 718 203 718 203 815 1040 815 1040 708 310		1031 101				
BLDG W-16 A-6 B-4 C-2	(WINDWARD WAY) S. C. MULL J. A. ROGERS J. W. & F. J. LASHBY	15 718 203 815 1040 815 1040						
BLDG W-17 A-4 B-2 C-1	(WINDWARD WAY) S. C. MULL M. K. & M. K. MILLS R. G. ROBERTS	14 718 203 718 203 718 203						
BLDG W-18 A-2 B-1 C-1	(WINDWARD WAY) S. C. MULL J. R. & E. L. HAHN C. H. & M. T. THORPE B. M. & E. P. HOLMES	15 718 203 815 1040 815 1040 707 100		1031 394				
BLDG W-19 A-1 B-1 C-1	(WINDWARD WAY) S. C. MULL RICHARD J. & KATHLEEN A. MANNING S. C. MULL	15 718 203 815 1040 815 1040						
BLDG W-20 A-1 B-1 C-1	(WINDWARD WAY) S. C. MULL T. D. EDWARDS A. S. FISK, TRUSTEE	15 718 203 815 1040 815 1040						
BLDG W-21 A-1 B-1 C-1	(WINDWARD WAY) S. C. MULL R. J. KICHLER R. A. GREEN J. SMITH	15 718 203 815 1040 815 1040 817 797		1031 103				
BLDG W-22 A-1 B-1 C-1	(WINDWARD WAY) S. C. MULL S. C. MULL S. C. MULL	15 718 203 815 1040 815 1040						
BLDG W-23 A-1 B-1 C-1	(WINDWARD WAY) S. C. MULL S. C. MULL S. C. MULL	15 718 203 815 1040 815 1040						
BLDG W-24 A-1 B-1 C-1	(WINDWARD WAY) S. C. MULL S. C. MULL S. C. MULL	15 718 203 815 1040 815 1040						
BLDG W-25								
BLDG W-26 A-1 B-1 C-1	(SIGNAL HILL) S. C. MULL S. C. MULL	15 718 203 815 1040		1031 818				
BLDG W-27 A-1 B-1 C-1	(SIGNAL HILL) S. C. MULL S. C. MULL	15 718 203 815 1040						
BLDG W-28 A-1 B-1 C-1	(SIGNAL HILL) S. C. MULL S. C. MULL	15 718 203 815 1040						
BLDG W-29 A-1 B-1 C-1	(SIGNAL HILL) S. C. MULL S. C. MULL	15 718 203 815 1040						

I-U  
U-1

BLDG UNIT	TRANSFERRED TO	Vol PG	TRANSFERRED TO	Vol PG	TRANSFERRED TO	Vol PG
BLDG 30	(SOUTH PINTAIL)	15 TO				
A-184	L.D. REBA	700 208				
B-184	G.M. SEANNETT	858 387	D.C. L.E.E. RUDGE	049 211		
BLDG 31	(NORTH PINTAIL)	15 83				
A-186	L.M. & G.A. CORTRIGHT	888 525	L.M. & G.A. CORTRIGHT TRUST	039 135		
B-186	R.A. FRITZSCHE	759 77				
C-186	R.C. & T.A. JACKSON	830 430				
BLDG 32	(NORTH PINTAIL)	15 91				
A-182	D.C. & R.G. SKRABER	751 389				
B-182	W.K. PLEVIER	751 354				
BLDG 33						
BLDG 34	(NORTH PINTAIL)	15 97				
A-160	N. PINTAIL DR	783 697				
B-160	G. & U. HARTLEY	822 406				
C-160	V. & B. WESER	736 977				
D-160	R.J. & L.N. SREB					
BLDG 35						
BLDG 36	(NORTH PINTAIL)	15 102				
A-170	A.D. STREIBER	771 205				
B-172	E.V. GORDON	753 1029	Society Animals, Inc. & Wilder and Moore	041 891	Key Trust Co. of Ohio N.A. Trust	029 1065
BLDG 37	(NORTH PINTAIL)	15 104				
A-174	R.F. & J.L. GIBSON	854 336				
B-174	R.V. HULSE	809 45				
C-178	E.J. & E.W. SCHMIDT					
BLDG 38	(NORTH PINTAIL)	16 112				
A-180	W.N. & J.M. SCHWABER	778 109				
B-182	H.N. BURSTEIN	741 971				
BLDG 39						
BLDG 40	(WOODSONG WAY)	16 118				
A-188	C.T. GRANT	831 684				
BLDG 41	(WOODSONG WAY)	15 145				
A-190	L.J. & E.H. DOLAN	844 24				
BLDG 42	(WOODSONG WAY)	16 118				
A-192	H.E. HENDERSHOFT	871 138				
BLDG 43						
BLDG 44	(WOODSONG WAY)	16 118				
A-194	K.F. SORACE	853 156				
BLDG 45	(WOODSONG WAY)	17 101				
A-198	M.H. STORAN - Horse	821 262				
BLDG 46	(WOODSONG WAY)	17 113				
A-200	R. JR. & L. CHANDLER	823 114				
BLDG 47	(WOODSONG WAY)	17 113				
A-202	M. PENSERO	814 799				
BLDG 48	(WOODSONG WAY)	18 113				
A-204	W.L. RISIUS	834 310	R.W. 3rd & D.S. Cragie	062 323		
BLDG 49						
BLDG 50	(TWIN CREEKS)	16 120				
A-210	A.K. JOHNSON	871 165	J.H. ANDERSON	061 778		
B-212	C. & E. CHAPPEL	804 37				
BLDG 51	(TWIN CREEKS)	19 121				
A-214	R.T. J. KSAUS	867 928				
B-216	K.M. CARLSON	895 71	F.M. ANDRUCCI	144 219		
BLDG 52	(TWIN CREEKS)	21 126				
A-218	A.D. WALTER	874 266				
BLDG 53	(TWIN CREEKS DRIVE)	17 126				
A-220	J. & B. COLLIER	873 514				
B-222	N. & H. DUBOIS	816 379				
BLDG 54	(TWIN CREEKS DRIVE)	16 125				
A-224	E. ADLER	809 284				
BLDG 55	(TWIN CREEKS DRIVE)	16 125				
A-226	G. & SIMILLERS	820 313	A.L. & C.R. HYDE	779 383		
B-228	J. & S. KALISER	861 369				
BLDG 56	(TWIN CREEKS)	16 125				
A-230	D. & J. BIPER	853 108				
B-232	E.A. LEONETTI	771 782				
BLDG 57	(TWIN CREEKS)	16 126				
A-234	R.W. SINIK	794 915				
BLDG 58	(TWIN CREEKS)	15 125				
A-238	D.J. JONES	710 1079				
B-240	S.H. & R.L. SILVER					
BLDG 59	(TWIN CREEKS)	16 126				
A-242	R.C. & S.C. MARCHANT	887 412				
B-244	W.R. UNDERLIED	833 677	J.L. FRIEDMAN	101 109		
BLDG 60						
BLDG 61	(OVERLOOK BROOK DRIVE)	18 125				
A-246	E. BELTON	852 311	D.H. Loop	001 100		
BLDG 62	(OVERLOOK BROOK DRIVE)	16 126				
A-248	T.J. & T.A. KRIGS	844 223				
B-250	A.M. KOVAL	842 258				
C-252	X. & C. WILSON	713 446				
BLDG 63	(OVERLOOK BROOK DRIVE)	16 126				
A-254	P.L. FAWCETT	776 135	C.D. FAWCETT, JR.	983 1035		
B-256	C. R. ZACHRIH	776 1856				

1-U  
U-3

BLDG/UNIT	TRANSFERRED TO	Vol Pg.	TRANSFERRED TO	Vol Pg.	TRANSFERRED TO	Vol Pg.	TRANSFERRED TO	Vol Pg.
BLDG 64 A-310	(OVERLOOK BROOK DRIVE) M. S. DUFFY	16 1855 688 196						
BLDG 65 A-312	(OVERLOOK BROOK DRIVE) A. J. HALLACK	16 1876 688 197						
BLDG 66 A-314	(OVERLOOK BROOK DRIVE) M. L. SWADBY	16 1898 688 198						
BLDG 67 A-316	(OVERLOOK BROOK DRIVE) R. C. HOGG, JR. & T. S. KORBELLON	16 1919 688 199						
BLDG 68 C-317	(OVERLOOK BROOK DRIVE) C. J. & M. S. GIBLIN	16 1940 688 200						
BLDG 69 A-318	(OVERLOOK BROOK DRIVE) E. LAZIO	17 1961 688 201	H. H. JENSEN TRUSTEE	1089 771				
BLDG 70 A-320	(OVERLOOK BROOK DRIVE) T. J. JOHNSON	17 1982 688 202	S. FROST	1089 772				
BLDG 71 A-322	(OVERLOOK BROOK DRIVE) A. P. S. ZANSTRONG	17 2003 688 203						
BLDG 72 A-324	(HEATHER HILL) M. J. F. J. CLIFTON	17 2024 688 204						
BLDG 73 A-216	(HEATHER HILL) M. R. MILLER	17 2045 688 205						
BLDG 74 A-218	(HEATHER HILL) C. C. SPATH	17 2066 688 206						
BLDG 75 A-220	(HEATHER HILL) W. F. HOTCHKIN	17 2087 688 207						
BLDG 76 A-222	(HEATHER HILL) W. A. B. MILLER	17 2108 688 208						
BLDG 77 A-224	(HEATHER HILL) R. A. E. BLAKE FAMILY TRUST	17 2129 688 209						
BLDG 78 A-226	(HEATHER HILL) G. BIANCHINI & N. BEAM	17 2150 688 210						
BLDG 79 A-228	(HEATHER HILL) J. E. D. B. GALLAGHER	17 2171 688 211						
BLDG 80								
BLDG 81								
BLDG 82								
BLDG 83								
BLDG 84								
BLDG 85								
BLDG 86								
BLDG 87								
BLDG 88								
BLDG 89								
BLDG 90								
BLDG 91								
BLDG 92								
BLDG 93								

1-U  
U-3

BLDG (UNIT)	TRANSFERRED TO	VOL Pg.	TRANSFERRED TO	VOL Pg.	TRANSFERRED TO	VOL Pg.	TRANSFERRED TO	VOL Pg.	TRANSFERRED TO	VOL Pg.
BLDG 91										
BLDG 95										
BLDG 96										
BLDG 97										
BLDG 98										
BLDG 99										
BLDG 100										
BLDG 101	(FAIRWAY VIEW) A-100 R.C. KAGY	21 1-3 923 1013								
BLDG 102										
BLDG 103										
BLDG 104										
BLDG 105										
BLDG 106	(FAIRWAY VIEW) A-120 H.C. FALL TRUSTEE	21 97								
BLDG 107	(FAIRWAY VIEW) A-110H C.J. REVE	21 18-51 774 713								
BLDG 108	(FAIRWAY VIEW) A-122 E. S. GALLO	17 143-17 331 478						970	1031	
BLDG 109	FAIRWAY VIEW - AMBUSHMENT A- M. FRENZ	23 135-15 1037 1327								
BLDG 110	FAIRWAY VIEW A- DR. EDWIN I. ST. QUAY	22 17-27 1216 581								
BLDG 111										
BLDG 112										
BLDG 113	(FAIRWAY VIEW) A-102 S. PETERSON	19 31-35 878 926								
BLDG 114	(CHIPPING LANE) A-125 P. R. RESCH	19 16-18 365 433								
BLDG 115	(CHIPPING LANE) A-126 D. S. & B.J. MANNING	18 171-11 349 367						1036	972	
BLDG 116										
BLDG 117										
BLDG 118	(CHIPPING LANE) A-119 D.B. MISSOURIAWORTH	18 175- 1416 18								
BLDG 119	(CHIPPING LANE) A-130 D.J. & R.M. JOYCE	18 76-79 360 316								
BLDG 120	(CHIPPING LANE) A-191 S.L. & M.R. DURCHSLAG B-192 P. H. J. FEIKEN	19 59-62 876 678 361 935								
BLDG 121										
BLDG 122	(CHIPPING LANE) A-144 R.D. & G.A. MANNING	21 103 971 17								

1 U  
U-5

U  
U-5

BLDG/UNIT	TRANSFERRED TO	VOL	Pg.	TRANSFERRED TO	VOL	Pg.	TRANSFERRED TO	VOL	Pg.	TRANSFERRED TO	VOL	Pg.
Bldg 123												
Bldg 121	(EAGLES POINT)	JK	953P									
A-135	E. O. MARCH	SVI	253									
Bldg 125	(EAGLES POINT)	JK	01-81									
A-136	W.F. MAURNEY, JR. & R.M. MAURNEY	818	1215									
Bldg 126	(EAGLES POINT)	JK	33-38					778	116			
A-137	S. I. HUNTER	835	331									
Bldg 127												
Bldg 128												
Bldg 129	(LONG DRIVE)	JK	133									
A-140	G. L. P. O'BRIEN	817	41					126	135			
Bldg 130	(LONG DRIVE)	JK	121									
A-141	J. A. BUTSON	853	1059									
THE ABOVE LISTED CONDITONAL ASSES. LUG. 018 311-316												
	Page #1	2	158ALc									
	Page #2	4	032 Ac									
	Page #3	6	41 Ac									
	Page #4	1	660 Ac									
	Page #5	1	072 Ac									
	Page #6	1	1722 Ac									
	Page #7	4	68236c									

DECLARATION OF CONDOMINIUM FOR THE WOODS AT AUBURN LAKES

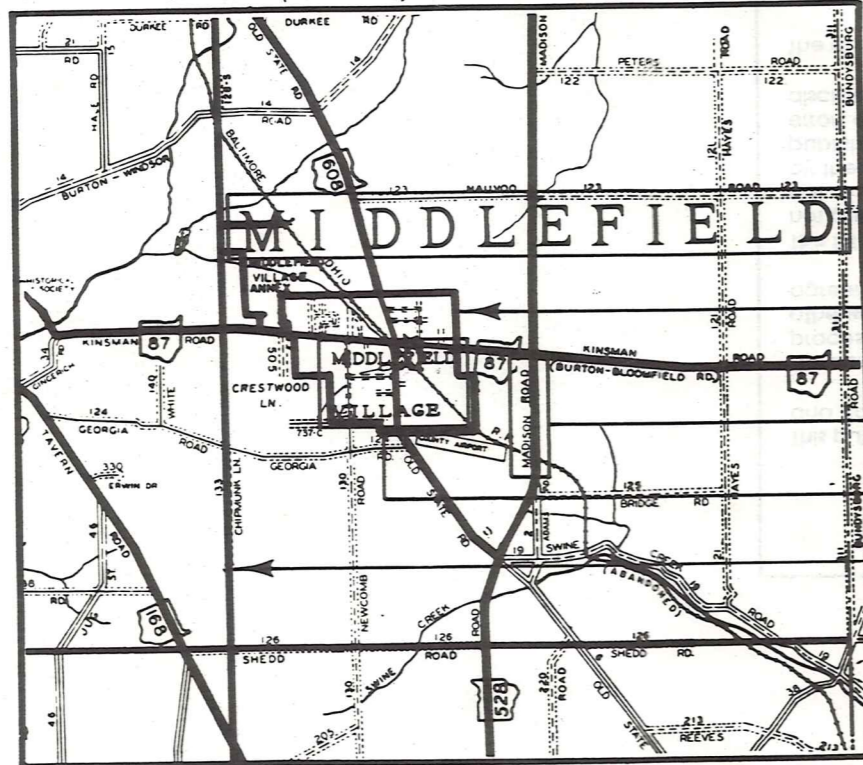
BLDG. UNIT	ROAD NAME	DATE AC.	PLAT -	AMENDMENT	VOL	PG	TRANSFERRED TO:	VOL	PG.
620	BLUE SPRUCE TRAIL	2/95 .597	LEGEND #1	ORIGINAL	22	77			
621	"	2/95 .597	LEGEND #1	ORIGINAL	22	77	S. J. MITCHELL	1008	1066
622	"	2/95 .597	LEGEND #8	AMENDMENT #7	23	50			
623	"	2/95 .597	LEGEND #8	AMENDMENT #7	23	50	AMERL-CON AUBURN INC.	1041	982
625	BLUE SPRUCE TRAIL	7/95 .714	LEGEND #3	AMENDMENT #2	22	103	AMERL-CON AUBURN INC.	1030	773
626	BLUE SPRUCE TRAIL	7/95 .714	LEGEND #3	AMENDMENT #2	22	103	AMERL-CON AUBURN INC.	1032	664
627	BLUE SPRUCE TRAIL	5/95 .579	LEGEND #2	AMENDMENT #1	22	91	J. N. TAYLOR	1015	1077
628	"	5/95 .579	LEGEND #2	AMENDMENT #1	22	91	AMERL-CON AUBURN INC.	1030	380
632	BLUE SPRUCE TRAIL	4/96 .530	LEGEND #9	AMENDMENT #8	23	59	AUBURN LAKES LTD PART (CPL-665)		
633	BLUE SPRUCE TRAIL	4/96 .530	LEGEND #9	AMENDMENT #8	23	59			
638	BLUE SPRUCE TRAIL	8/95 .528	LEGEND #4	AMENDMENT #3 (PRDCL 114)	22	113	AMERL-CON AUBURN INC.	1043	56
639	BLUE SPRUCE TRAIL	8/95 .528	LEGEND #4	AMENDMENT #3	22	117	AMERL-CON AUBURN INC.	1026	647
FOR AC. SLL MAP ALL LOTS IN AUBURN LKS LTD PART.		886	865						
DOGWOOD LANE (MAP)		2/95 .634	LEGEND 1	ORIGINAL	22	77			
DOGWOOD LANE (0.634 AC)		5/95	LEGEND 2	AMENDMENT #1	22	91			
507	DOGWOOD LANE LEAVING G. 323 AC	7/95 .267	LEGEND 5	AMENDMENT #4	23	02	AMERL-CON AUBURN INC.	1030	876
508	DOGWOOD LANE LEAVING S. 381	11/95 .398	LEGEND 7	AMENDMENT #6	23	28	AMERL-CON AUBURN INC.	1035	275
510	DOGWOOD LANE LEAVING S. 92 AC	7/95 .437	LEGEND 6	AMENDMENT #5	23	06	AMERL-CON AUBURN INC.	1029	120
TOP LOT 9142 AUBURN LAKES DRIVE		2/95	LEGEND #1	ORIGINAL	22	77			
WELL #3 - 1142		2/95	"	"	22	77			
WATER PLANT 4124 PINE BREEZE DRIVE		2/95	"	"	22	77			
DOGWOOD LANE		2/95	LEGEND #1	ORIGINAL	22	77			

TWM:REDI  
 1-800-345-7334  
 SCALE IN 1/10 OF AN INCH

# Explanation and Use Sheet for Geauga County, Ohio

A

SAMPLE (PARTIAL) COUNTY INDEX MAP



Tract Lot Number

Acreage

Township Name

Village Boundary

Street Name

Village Name

Township Boundary

Owners Name

Denotes Continuous Ownership

Deed Book & Page

Map Page Number

Township Name

Village Name

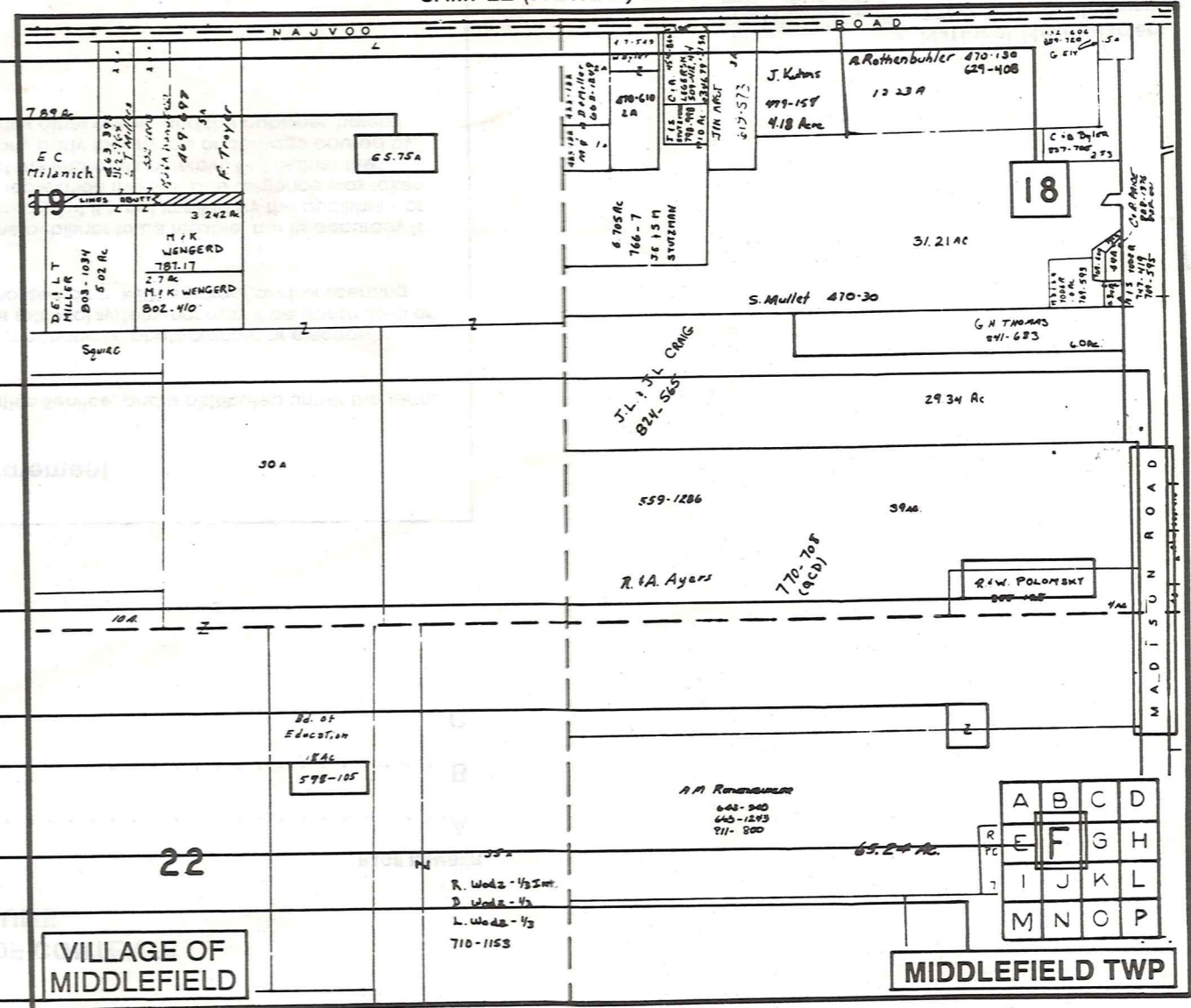
Village Boundary

Street Name

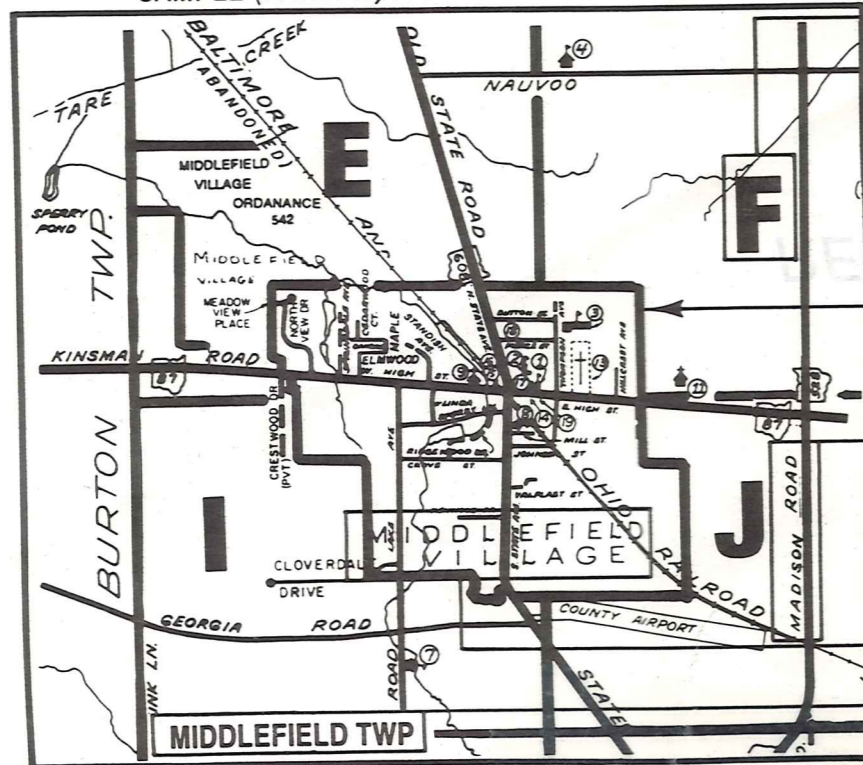
Village Name

Township Name

SAMPLE (PARTIAL) MAP PAGE



SAMPLE (PARTIAL) MUNICIPALITY INDEX MAP



## USE OF THE MAP VOLUME

- LOCATE THE GENERAL AREA OF INTEREST ON THE COUNTY INDEX MAP AND NOTE THE MUNICIPALITY NAME (TOWNSHIP OR VILLAGE).
  - REFER TO THE TABLE OF CONTENTS AND NOTE THE BEGINNING ATLAS PAGE NUMBER FOR THE MUNICIPALITY OF INTEREST.
  - TURN TO THE PAGE INDICATED, ON THIS PAGE WILL APPEAR AN INDEX MAP FOR THAT MUNICIPALITY.
  - LOCATE THE GENERAL AREA OF INTEREST AND NOTE THE MAP PAGE NUMBER. THIS MAY BE EITHER A LETTER OR A NUMBER.
  - MAP PAGES ARE IN ALPHABETICAL (OR NUMERICAL) SEQUENCE FOLLOWING THE MUNICIPALITY INDEX MAP. FOLLOW SEQUENCE TO THE MAP PAGE INDICATED.
  - LOCATE SPECIFIC PARCEL OF INTEREST AND NOTE THE DESIRED INFORMATION.
- NOTE: ON SOME MAPS YOU MAY BE REFERRED TO A DETAIL SHEET SHOWING AN ENLARGEMENT OF THE AREA. THESE MAPS ARE FOUND AT THE END OF THE REGULAR MAP PAGES IN EACH MUNICIPALITY IN EITHER ALPHABETICAL OR NUMERICAL SEQUENCE.
- NOTE: CHARDON VILLAGE HAS TITLE SHEETS. TO LOCATE OWNERS NAME, NOTE THE PARCEL NUMBER, REFER TO THE TITLE PAGE FOLLOWING THE MAP OF INTEREST, FOLLOW NUMERICAL SEQUENCE TO THE PARCEL NUMBER OF INTEREST AND NOTE THE DESIRED INFORMATION. IN ALL OTHER MUNICIPALITIES THE OWNERS NAME APPEARS ON THE MAP PAGE.